

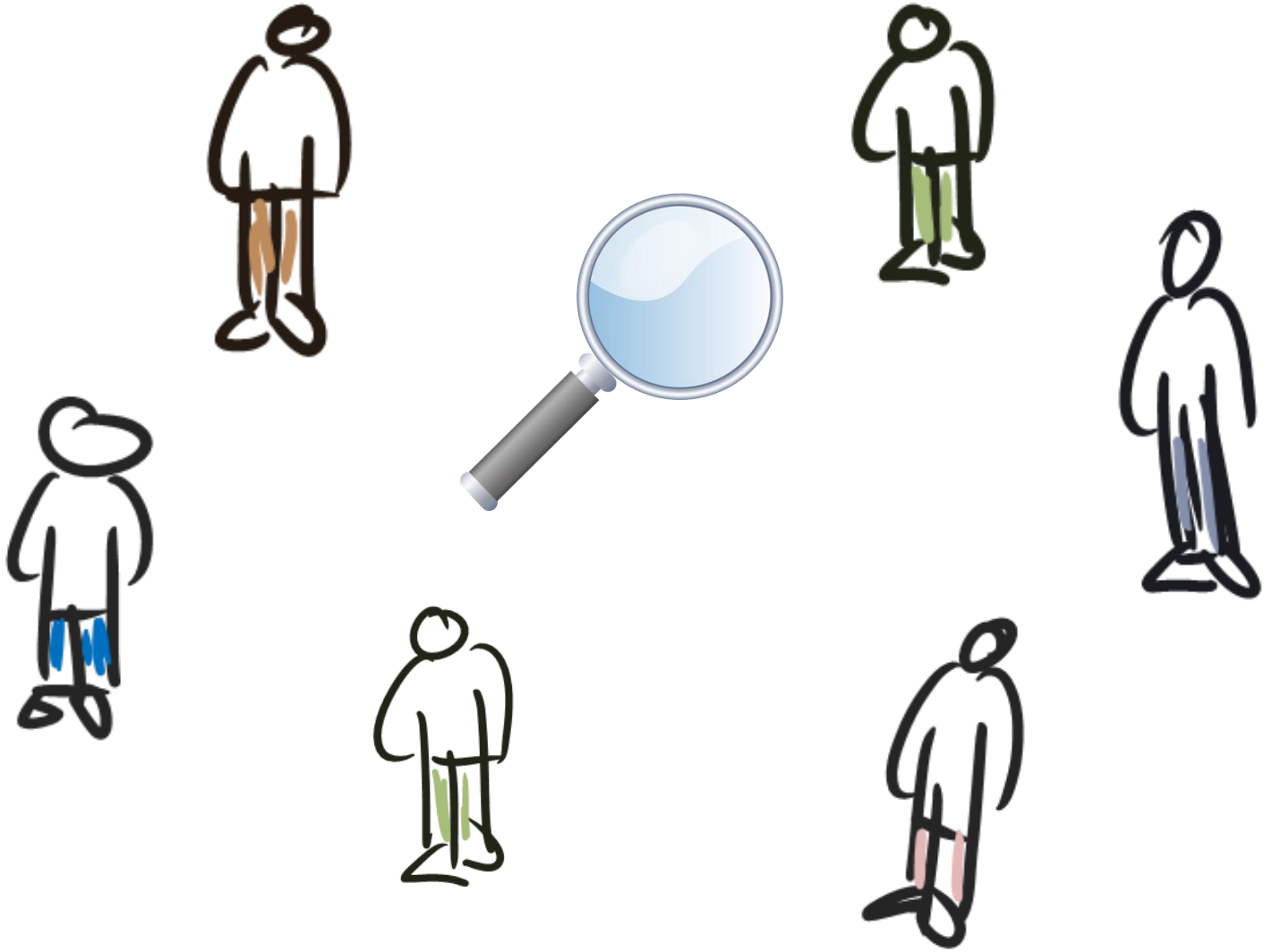


The Child Protection Team

**OCWTP
FOSTER CARE, KINSHIP CARE, AND
ADOPTION PRESERVICE TRAINING**

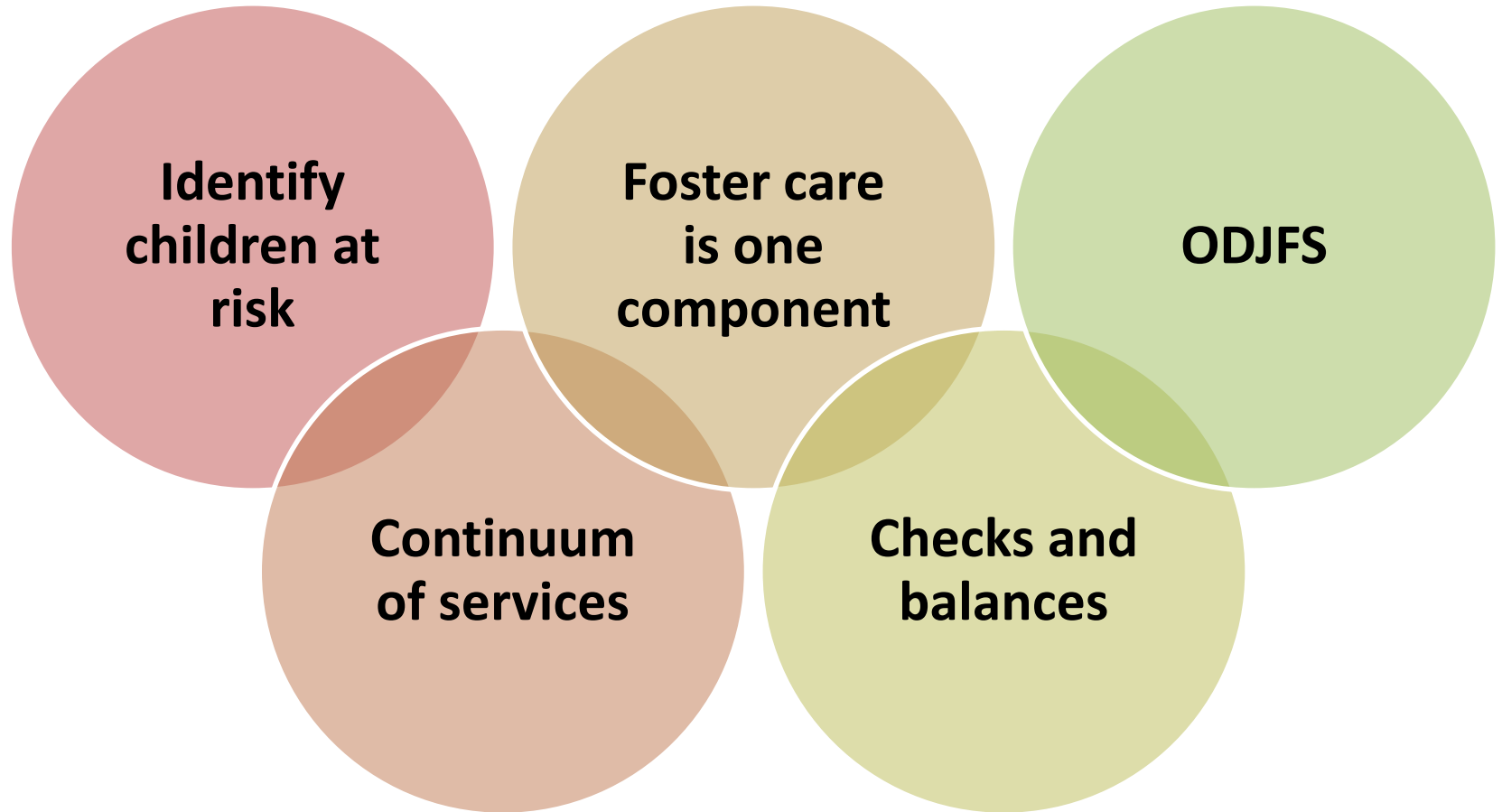
You will be able to:

- ✓ Identify the members of the child welfare team and the role of these members in serving a child
- ✓ Identify advantages and challenges to teaming
- ✓ Describe the life of a child welfare case from allegation to permanency (reunification, legal custody, adoption)

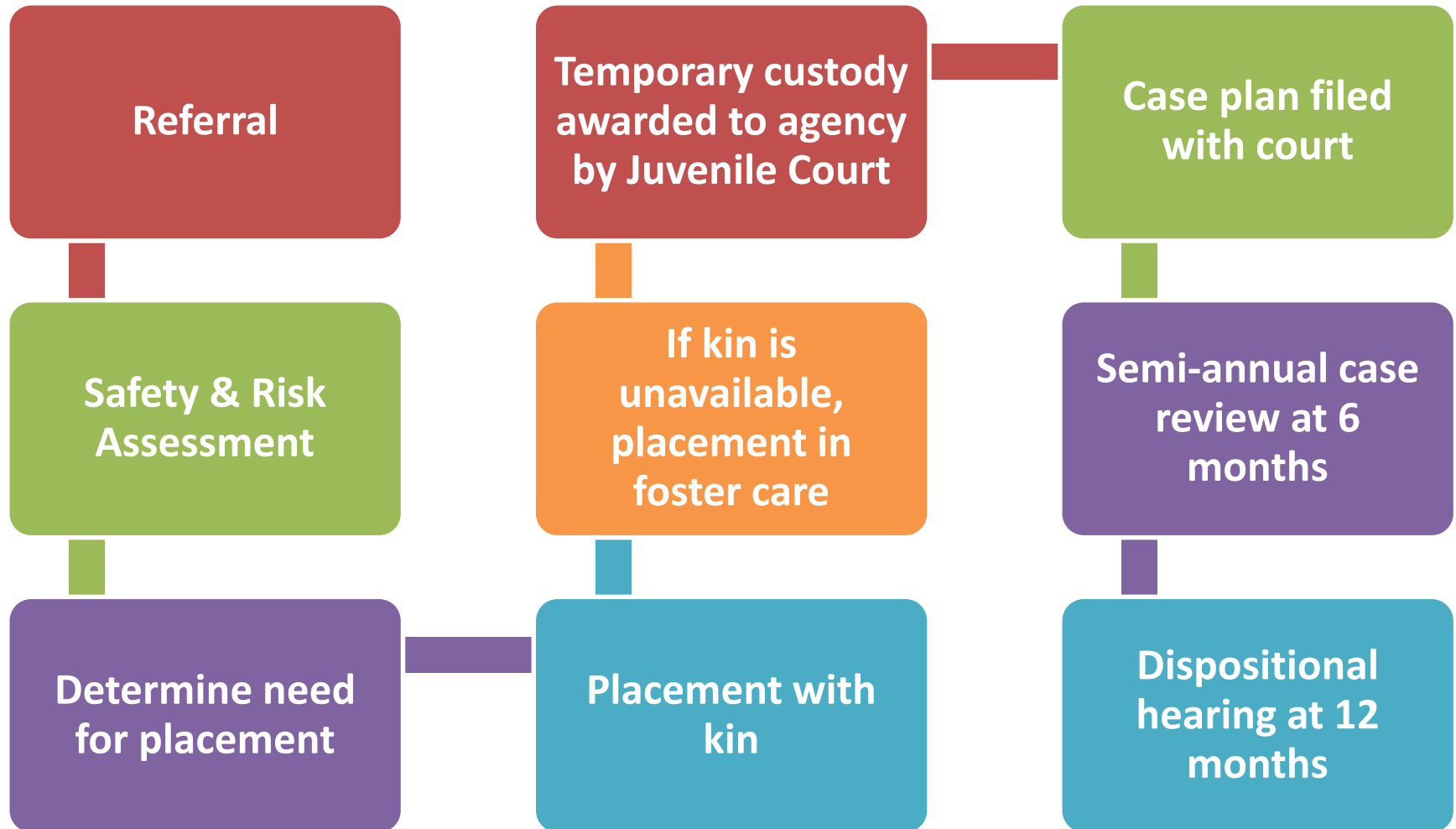


Overview of the Child Welfare System



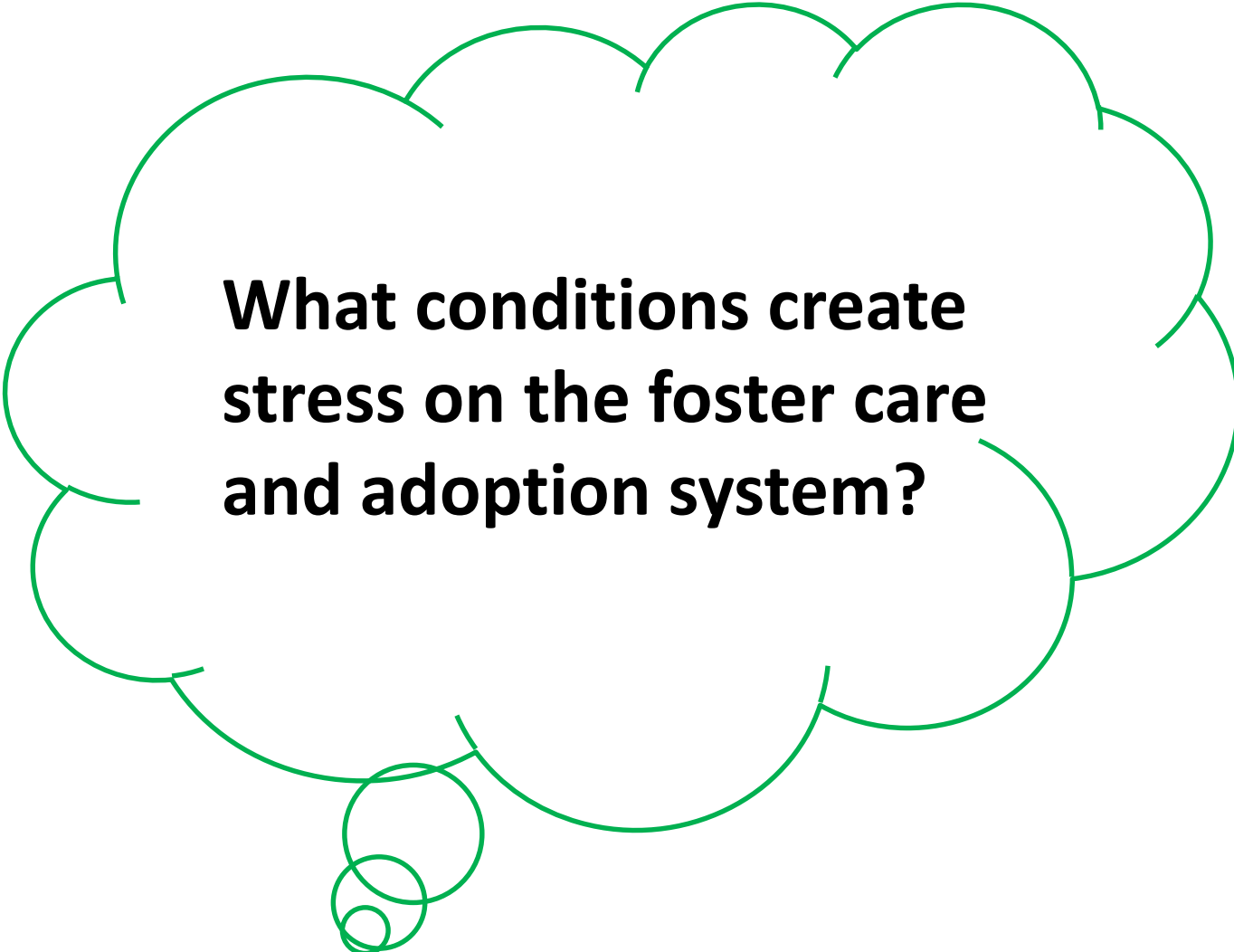


Timeline of Foster Care Journey





Permanency Goal



**What conditions create
stress on the foster care
and adoption system?**

The background of the entire image is a close-up photograph of dry, cracked earth. The cracks are deep and irregular, forming a network across the frame. The soil is a light brown or tan color, with some darker patches where the cracks are deeper.

**Increased
demands**

**Limited
Reimbursement**

**Complex
needs of
children**

**Lack of
support**

**Lack of
involvement in
planning for
care**

**Caregivers with
limited time &
energy**

**Overwhelmed
caseworkers**

**Incomplete
information**

**Underutilization of kinship
caregivers**

TO DO :

1 -

2 -

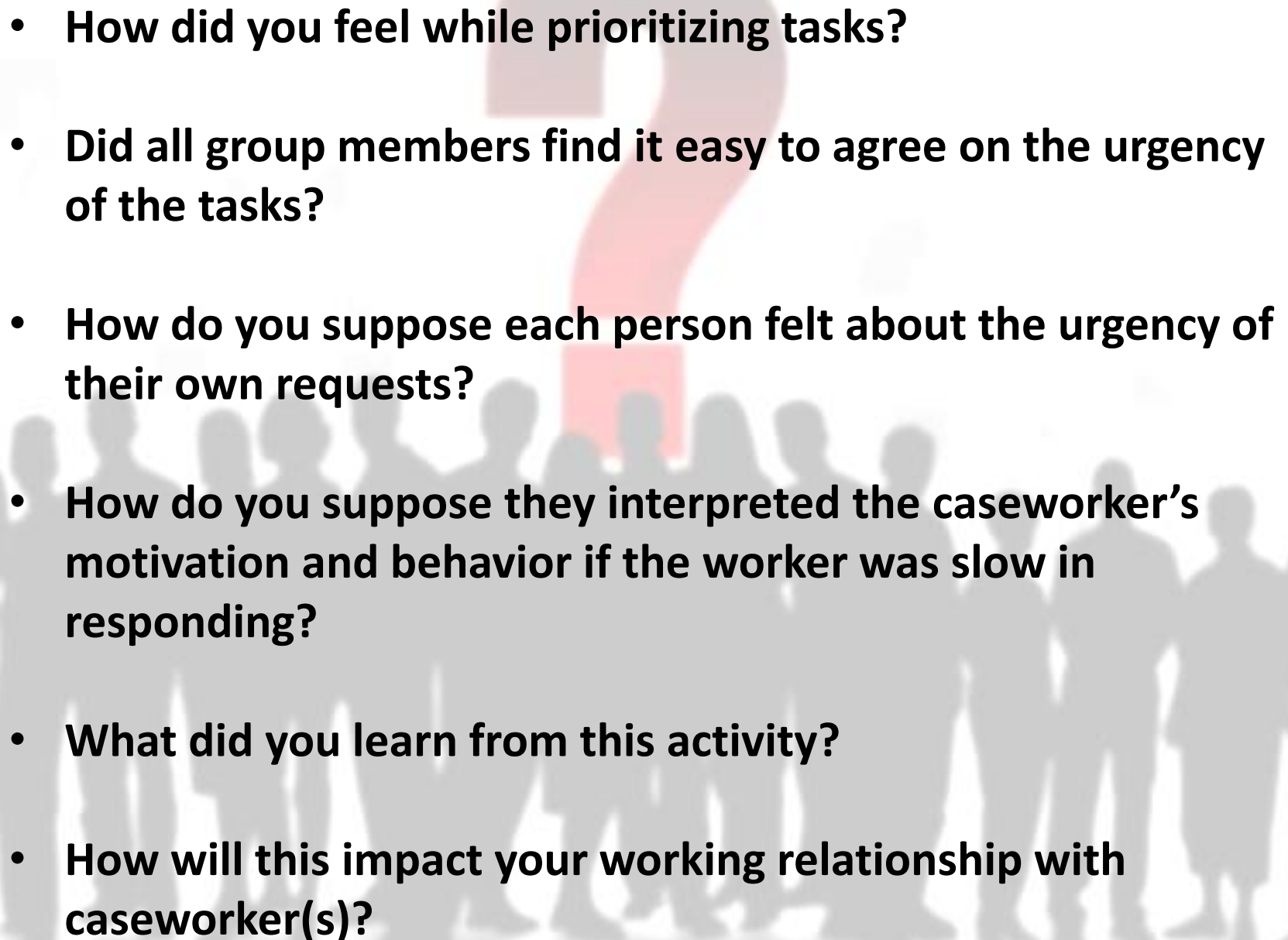
3 -

4 -

5 -

6 -



- 
- **How did you feel while prioritizing tasks?**
 - **Did all group members find it easy to agree on the urgency of the tasks?**
 - **How do you suppose each person felt about the urgency of their own requests?**
 - **How do you suppose they interpreted the caseworker's motivation and behavior if the worker was slow in responding?**
 - **What did you learn from this activity?**
 - **How will this impact your working relationship with caseworker(s)?**

MOTIVATION



History of Foster Care in the US



1628

1873

1962





Significant Legislation

1978

- **The Indian Child Welfare Act**

1980

- **The Adoption Assistance and Child Welfare Act**

1994

- **Multi-Ethnic Placement Act (MEPA)**

1996

- **Interethnic Placement Act**

1997

- **The Adoption and Safe Families Act (ASFA)**

1999

- **Federal Foster Care Independence Act (Chaffee Act)**

2008

- **Fostering Connections to Success and Increasing Adoptions Act**

2014

- **Preventing Sex Trafficking and Strengthening Families Act**



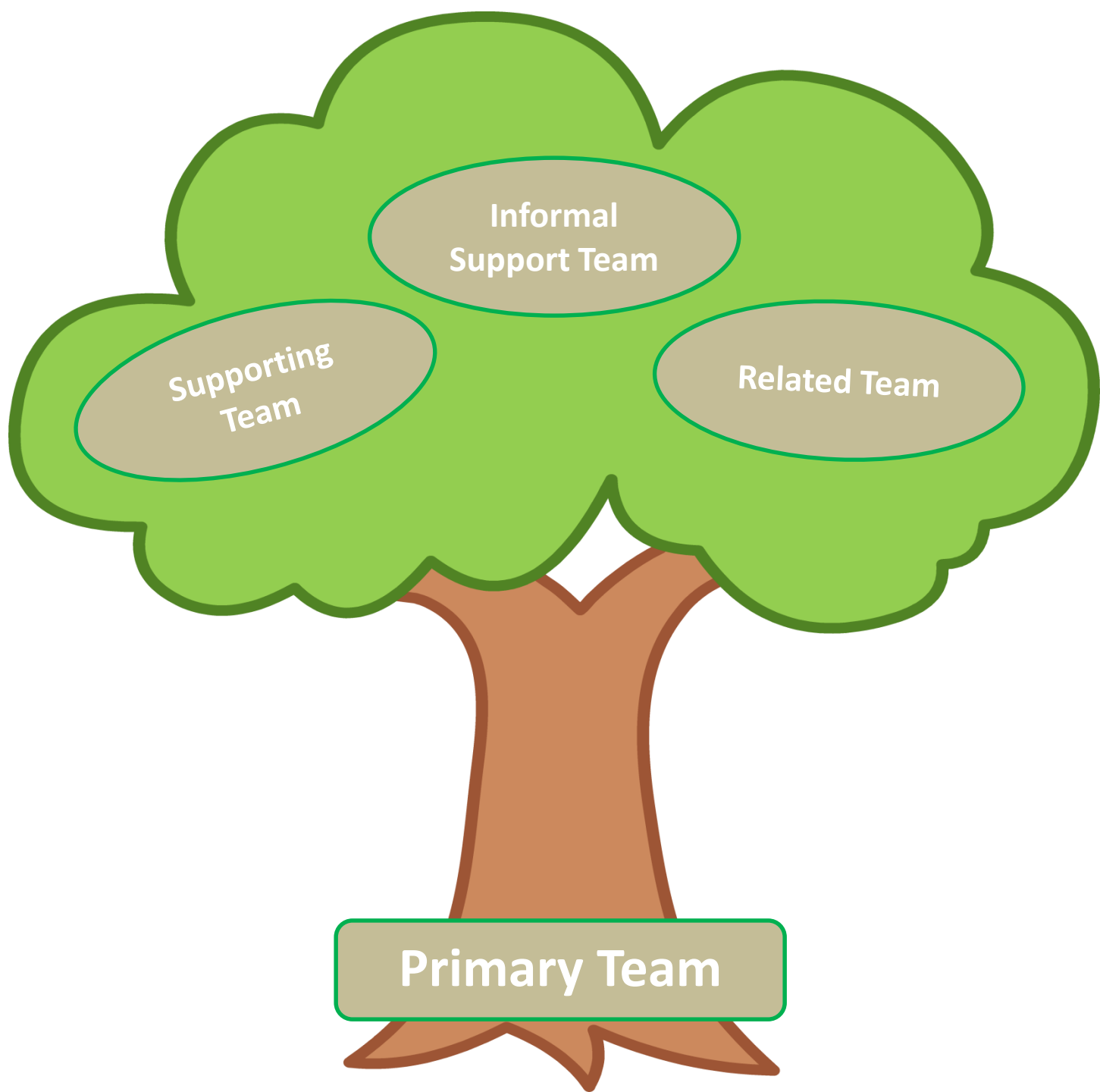
Be an advocate for your child

What is a Team?





Primary Parents are on the Team



Informal
Support Team

Supporting
Team

Related Team

Primary Team



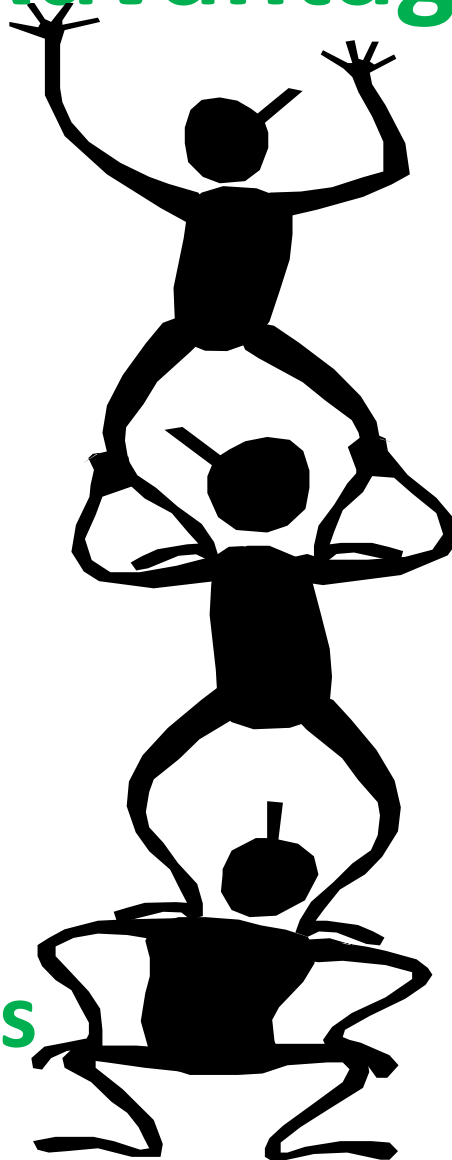
**Don't
forget
about the
youth's
voice!**



What You Need to Know About Juvenile Court

Advantages

Challenges



Team members must:

Participate in activities

Agree on the goal

Acknowledge
motivators

Plan!

Build trust

Advocate

Communicate

Agree to disagree

Be trained and
informed



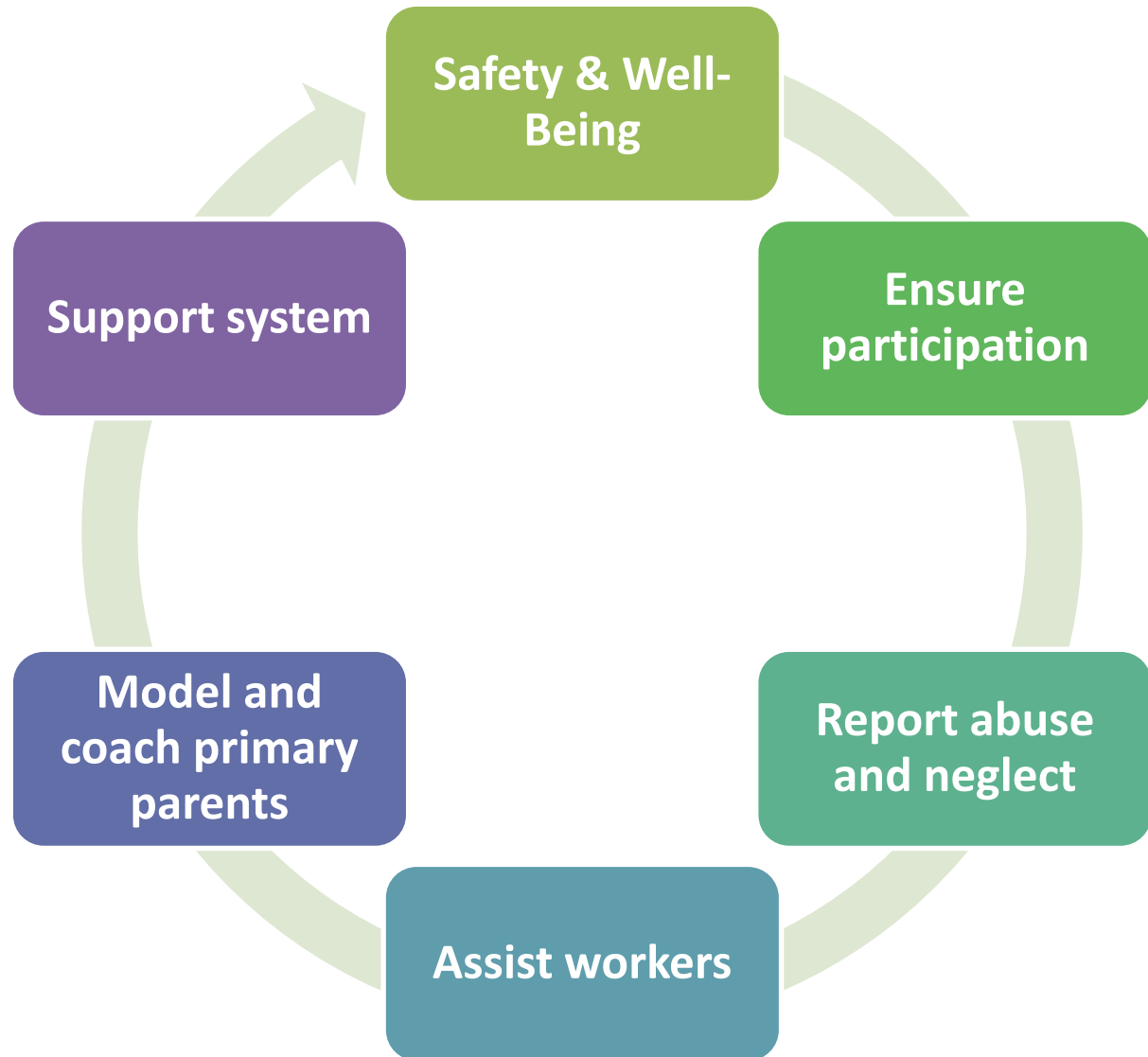


2 Advocacy Roles

Advocacy for all children...



Advocacy for your child...



Transfer of

LEARNING

LEARNING



Case Study:

***What's Wrong
with this
Picture?***

1

The child is a member of his/her
child welfare team.

2

Teaming benefits all members of the
child welfare team.

3

The most common case plan goal is reunification with the biological/primary family.



Thank you!

**OCWTP
FOSTER CARE, KINSHIP CARE, AND
ADOPTION PRESERVICE TRAINING**